

ULTRABAKE™ CAPS 315°C

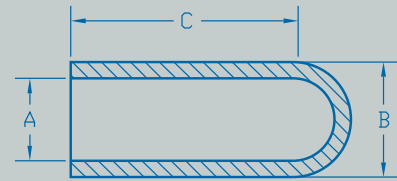


- Recommended for Powder Coating, E-Coating, Plating and Anodising
- Ultrabake™ Caps mask studs, tube ends, and slotted holes
- Colour coding increases visibility and eases the job of sorting plugs after use
- Ideal for masking plain and threaded studs
- Can be used as a parallel plug to mask through holes
- Custom designs available
- Small batch quantities if required
- See also washer caps on page 11 and tubing/sleeves on page 28
- Lower temperature caps available in PVC (see page 12) and Neoprene rubber

Part Number	Colour	Fits Thread		Dimensions (mm)			Quantity Per Bag
		Metric	UNC	A	B	C	
SC37-0500	CLEAR			0.94	2.54	12.70	1000
SC62	DARK BLUE			1.58	4.75	25.40	1000
SC70	CLEAR	M2	2-56	1.78	4.32	25.40	1000
SC93	PINK		3-48	2.36	4.95	19.05	1000
SC93-0500	DARK GREY		3-48	2.36	4.95	12.70	1000
SC93-1000	WHITE		3-48	2.36	4.95	25.40	1000
SC100-0500	DARK BLUE	M3	4-40	2.54	5.08	12.70	1000
SC100	LIGHT GREEN	M3	4-40	2.54	5.08	25.40	1000
SC109-0500	YELLOW		5-40	2.77	5.46	12.70	1000
SC109	GREY		5-40	2.77	5.46	19.05	1000
SC109-1000	WHITE		5-40	2.77	5.46	25.40	1000
SC125-0500	LIGHT BLUE		6-32	3.18	6.35	12.70	1000
SC125	BLACK		6-32	3.18	6.35	25.40	1000
SC140-0500	CLEAR			3.56	6.73	12.70	1000
SC140	WHITE			3.56	6.73	25.40	1000
SC148-0500	DARK BLUE	M4		3.76	6.10	12.70	1000
SC148-0750	DARK GREY	M4		3.76	6.10	19.05	1000
SC148	PINK	M4		3.76	6.10	25.40	1000
SC156-0500	LIGHT GREEN		8-32	3.96	7.11	12.70	1000
SC156	YELLOW		8-32	3.96	7.11	25.40	1000
SC156-1250	CLEAR		8-32	3.96	7.11	31.75	1000
SC164-1000	BLACK			4.17	7.42	25.40	1000
SC172-0500	GREY		10-24	4.38	7.62	12.70	1000
SC172	LIGHT BLUE		10-24	4.38	7.62	25.40	1000
SC172-1500	CLEAR		10-24	4.38	7.62	38.10	1000
SC180	BLACK	M5		4.57	7.11	25.40	1000
SC187-0500	WHITE		12-24	4.75	8.00	12.70	1000
SC187-0750	LIGHT BLUE		12-24	4.75	8.00	19.05	1000
SC187	CLEAR		12-24	4.75	8.00	25.40	1000
SC218	YELLOW			5.54	8.59	25.40	500
SC223-0500	DARK BLUE	M6		5.66	8.76	12.70	500
SC223-1000	BLACK	M6		5.66	8.76	25.40	500
SC223	PINK	M6		5.66	8.76	38.10	500
SC234-0500	WHITE		1/4-20	5.94	9.14	12.70	500
SC234	LIGHT GREEN		1/4-20	5.94	9.14	25.40	500
SC234-1500	YELLOW		1/4-20	5.94	9.14	38.10	500
SC250-0500	CLEAR			6.35	9.65	12.70	500
SC250	GREY			6.35	9.65	25.40	500
SC281-0500	YELLOW		5/16-18	7.14	10.16	12.70	500
SC281	LIGHT BLUE		5/16-18	7.14	10.16	25.40	500
SC295-0500	BLACK	M8		7.49	10.67	12.70	500
SC295-1000	LIGHT GREEN	M8		7.49	10.67	25.40	500
SC295	CLEAR	M8		7.49	10.67	38.10	500
SC312	WHITE			7.92	11.18	25.40	500
SC312-1500	PINK			7.92	11.18	38.10	500
SC340	BLACK			8.64	11.18	25.40	500
SC355	LIGHT GREEN		3/8-16	9.02	12.32	38.10	500
SC375-0500	PINK	M10		9.53	12.83	12.70	500
SC375-0750	DARK BLUE	M10		9.53	12.83	19.05	500
SC375	YELLOW	M10		9.53	12.83	25.40	500
SC375-1500	GREY			9.53	12.83	38.10	500
SC406	LIGHT BLUE		7/16-14	10.31	13.49	25.40	500
SC437	BLACK			11.10	14.35	25.40	500
SC456-1000	PINK	M12		11.58	14.76	25.40	500
SC456	CLEAR	M12		11.58	14.76	38.10	500

ULTRABAKE™ CAPS 315°C

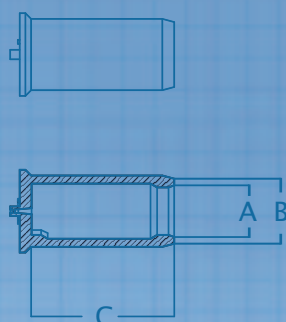
Part Number	Colour	Fits Thread		Dimensions (mm)			Quantity Per Bag
		Metric	UNC	A	B	C	
SC468	WHITE			11.89	15.06	25.40	500
SC480-1000	LIGHT GREY		1/2-13	12.19	15.37	25.40	500
SC480	PINK		1/2-13	12.19	15.37	38.10	500
SC500	LIGHT GREEN			12.70	15.88	38.10	500
SC535	YELLOW	M14		13.59	16.13	38.10	250
SC535-3000	GREY	M14		13.59	16.13	76.20	250
SC562	LIGHT BLUE			14.28	17.42	38.10	250
SC600	BLACK	M16	5/8-11	15.24	18.39	38.10	250
SC625	CLEAR			15.88	19.05	38.10	250
SC625-2500	WHITE			15.88	19.05	63.50	250
SC687	PINK			17.45	20.63	38.10	250
SC730	LIGHT GREEN	M19		18.54	21.72	38.10	250
SC750	YELLOW			19.05	22.23	38.10	250
SC750-3500	GREY			19.05	22.23	88.90	250
SC780	LIGHT BLUE			19.81	22.99	38.10	250
SC812	BLACK			20.63	23.80	38.10	250
SC875	CLEAR			22.23	25.40	38.10	250
SC937	WHITE			23.80	26.98	38.10	250
SC970	PINK	M25		24.64	27.81	38.10	250
SC1000	LIGHT GREEN			25.40	28.58	38.10	250
SC1000-2000	YELLOW			25.40	28.58	50.80	250
SC1062	GREY			26.98	30.15	50.80	100
SC1125	LIGHT BLUE			28.58	31.75	38.10	100
SC1187	BLACK			30.15	33.33	38.10	100
SC1250	CLEAR			31.75	35.10	38.10	100
SC1350	WHITE			34.29	37.69	44.45	100
SC1500	PINK			38.10	41.28	25.40	100
SC1500-1750	LIGHT GREEN			38.10	41.28	44.45	100
SC1750	YELLOW			44.45	47.63	50.80	100
SC1875	GREY			41.63	50.80	50.80	100
SC2000	LIGHT BLUE			50.80	53.98	50.80	100



- Reusable
- The caps are flexible so they can fit over a number of different diameters
- Manufactured from ULTRABAKE™ silicone to give a long working life

ULTRABAKE™ VENTING CAP-PLUGS 315°C (PATENT PENDING)

Part Number	Colour	Fits Thread		Dimensions (mm)			Quantity Per Bag
		Metric	UNC	A	B	C	
UVCP234	YELLOW		1/4-20	5.94	11.43	25.40	250
UVCP355	GREEN		3/8-16	9.02	14.35	38.10	250
UVCP500	BLUE			12.70	19.05	38.10	250
UVCP1000	RUSTY RED			25.40	31.75	38.10	250



- Fits over studs and plug holes
- Allows for venting by either puncturing, slitting or simply pulling off the vent

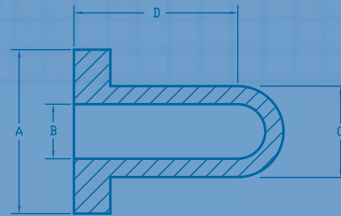
10
[MASKING CAPS]

ULTRABAKE™ WASHER CAPS 315°C

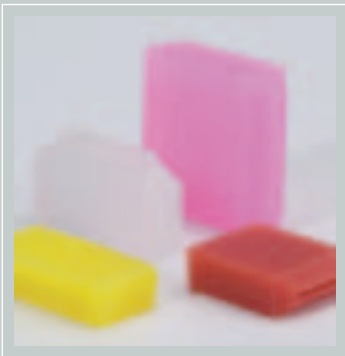


Part Number	Colour	Thread	Dimensions (mm)				Quantity Per Bag
			A	B	C	D	
WC125-0500	CLEAR		12.70	3.18	6.60	25.40	500
WC156-0500	CLEAR		12.70	3.96	8.13	25.40	500
WC172-0500	CLEAR		12.70	4.37	9.78	25.40	500
WC027-012	LIGHT GREEN	M3	11.99	2.69	6.20	25.40	500
WC037-012	PINK	M4	11.99	3.71	6.71	25.40	500
WC046-015	CLEAR	M5	15.01	4.60	8.20	25.40	500
WC056-015	RED	M6	15.01	5.59	8.71	25.40	500
WC075-018	BLACK	M8	18.01	7.49	10.69	25.40	250
WC095-018	YELLOW	M10	20.83	9.50	12.70	25.40	250
WC115-025	CLEAR	M12	24.99	11.51	16.69	25.40	250
WC155-031	PURPLE	M16	30.99	15.49	20.70	25.40	250
WC195-038	GREY	M20	38.00	19.51	24.69	25.40	250

- Recommended for Powder Coating, E-Coating, Plating and Anodising
- Provides a concentric mask around a stud
- May be used as a cap or plug
- Reusable

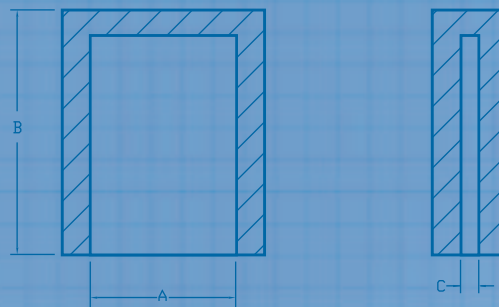


ULTRABAKE™ SPADE TERMINAL CAPS 315°C



Part Number	Colour	Dimensions (mm)			Quantity Per Bag
		A	B	C	
SRC-1	CLEAR	6.30	10.10	0.76	1000
SRC-2	RUSTY RED	6.30	11.58	0.76	1000
SRC-3	CLEAR	11.94	9.50	1.02	1000
SRC-4	YELLOW	11.68	7.11	0.89	1000
SRC-5	PINK	12.45	17.45	0.19	1000

- Special rectangular cap used for Powder Coating and E-Coating
- Ideal for masking grounding tabs
- Reusable

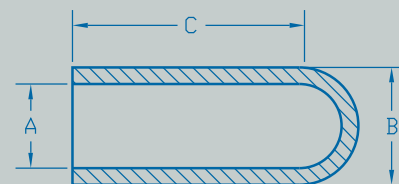


VINYL CAPS 177°C

Part Number	Dimensions (mm)			Quantity Per Bag
	A	B	C	
PS62	1.58	3.53	12.70	1000
PS80-0500	2.03	4.57	12.70	1000
PS80	2.03	4.57	19.05	1000
PS93-0500	2.36	4.90	12.70	1000
PS93	2.36	4.90	19.05	1000
PS109-0500	2.77	5.31	12.70	1000
PS109	2.77	5.31	25.40	1000
PS125-0500	3.18	5.72	12.70	1000
PS125	3.18	5.72	25.40	1000
PS140-0500	3.56	6.60	12.70	1000
PS140	3.56	6.60	25.40	1000
PS156-0500	3.96	5.74	12.70	1000
PS156	3.96	5.74	25.40	1000
PS172-0500	4.37	6.91	12.70	1000
PS172	4.37	6.91	25.40	1000
PS187-0500	4.75	7.29	12.70	1000
PS187	4.75	7.29	25.40	1000
PS203-0500	5.16	7.95	12.70	1000
PS203	5.16	7.95	25.40	1000
PS218-0500	5.54	8.33	12.70	1000
PS218	5.54	8.33	25.40	1000
PS234-0500	5.94	8.74	12.70	1000
PS234	5.94	8.74	25.40	1000
PS250-0500	6.35	9.40	12.70	1000
PS250	6.35	9.40	25.40	1000
PS281-0500	7.14	9.93	12.70	1000
PS281	7.14	9.93	25.40	1000
PS312-0500	7.93	10.97	12.70	1000
PS312	7.93	10.97	25.40	1000
PS343	8.71	11.76	25.40	1000
PS375	9.53	12.83	25.40	1000
PS406	10.31	13.61	25.40	1000
PS437	11.10	14.40	25.40	1000
PS500	12.70	15.49	25.40	500
PS531	13.49	16.41	25.40	500
PS562	14.28	17.32	25.40	500
PS625	15.88	18.93	25.40	500
PS687	17.45	20.50	25.40	500
PS750	19.05	22.35	25.40	500
PS812	20.63	23.93	25.40	500
PS875	22.23	25.53	25.40	500
PS937	23.80	27.10	25.40	500
PS1000	25.40	28.70	25.40	500
PS1062	26.98	30.28	25.40	500
PS1125	28.58	31.88	25.40	500
PS1187	30.15	33.45	25.40	500
PS1250	31.75	35.05	25.40	500
PS1375	34.93	38.23	25.40	500
PS1500	38.10	41.40	25.40	500
PS1625	41.28	44.58	25.40	500
PS1750	44.45	47.75	25.40	500
PS1875	47.63	50.93	25.40	500
PS2000	50.80	54.10	25.40	500



- Recommended for Painting, Plating and Anodising
- Ideal for studs, slotted holes, tube ends and threaded holes
- Reusable
- Top quality plastisol material
- High visibility yellow colour (other colours and designs available)



- See also pages 9-10 for higher temperature (315°C) caps